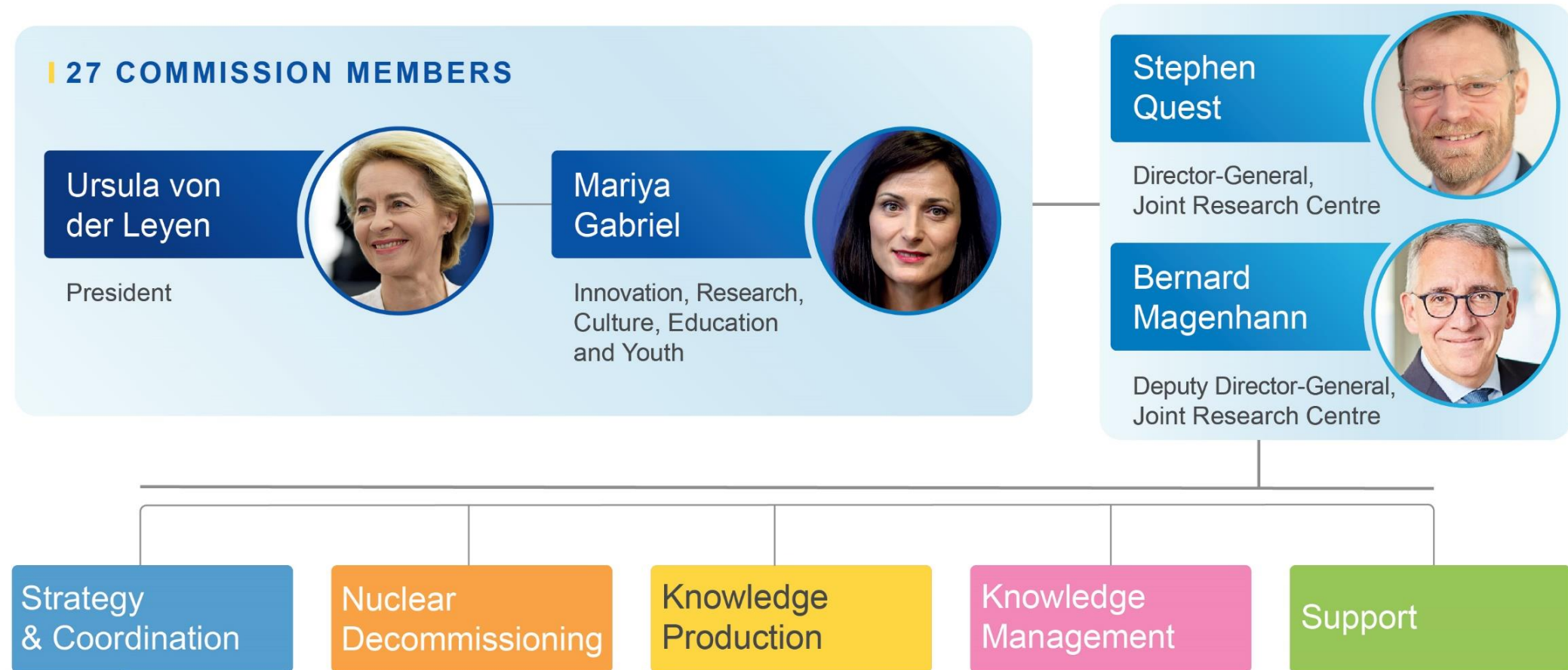


JRC's initiatives for KT at European level

Netval summer school, 14 September 2021

**Giancarlo Caratti,
Unit - Intellectual Property and Technology Transfer
European Commission, DG Joint Research Centre**

The JRC within the European Commission





JRC Mission

As the science and knowledge service of the European Commission our mission is to support EU policies with independent evidence throughout the whole policy cycle.

JRC sites

Headquarters in **Brussels**
and research facilities located
in **5 Member States**:

- Belgium (Geel)
- Germany (Karlsruhe)
- Italy (Ispra)
- The Netherlands (Petten)
- Spain (Seville)



JRC role: facts and figures



Policy neutral: has no policy agenda of its own



More than **50** large scale research facilities
More than **110** online databases



About **2 800** staff, nearly **70 %** of whom
are **scientific/technical staff**

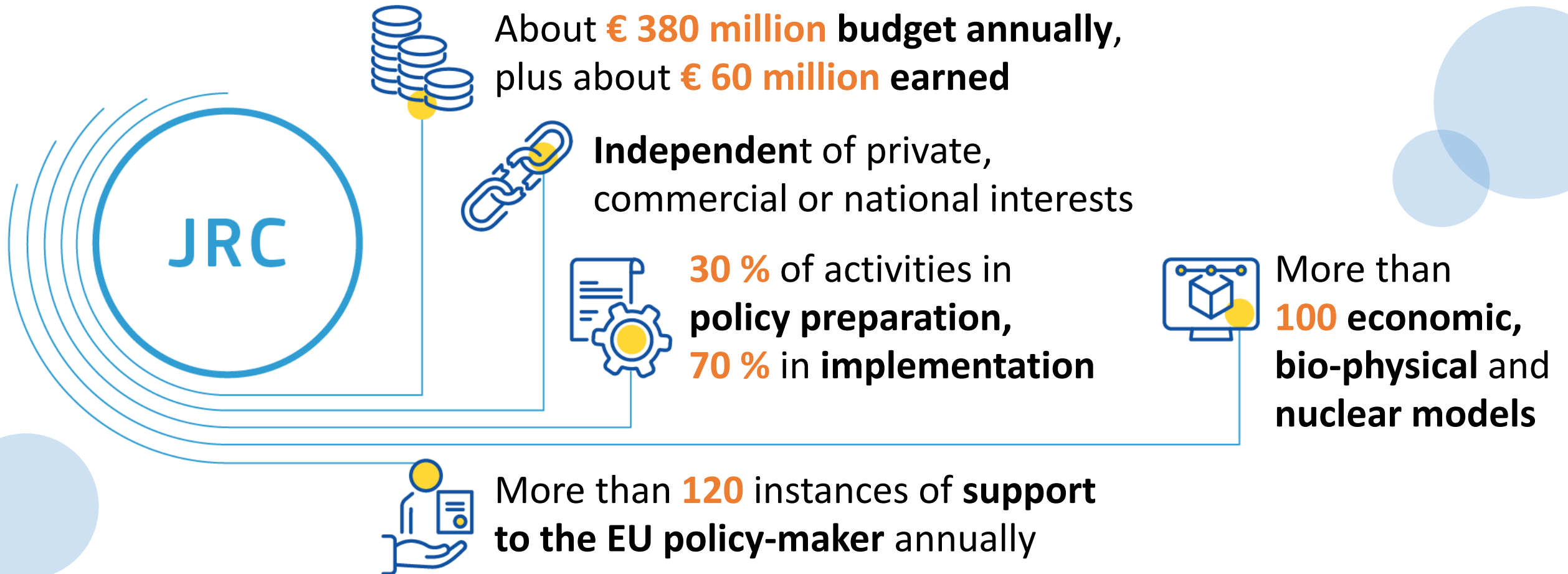


83 % of core research
staff with PhDs



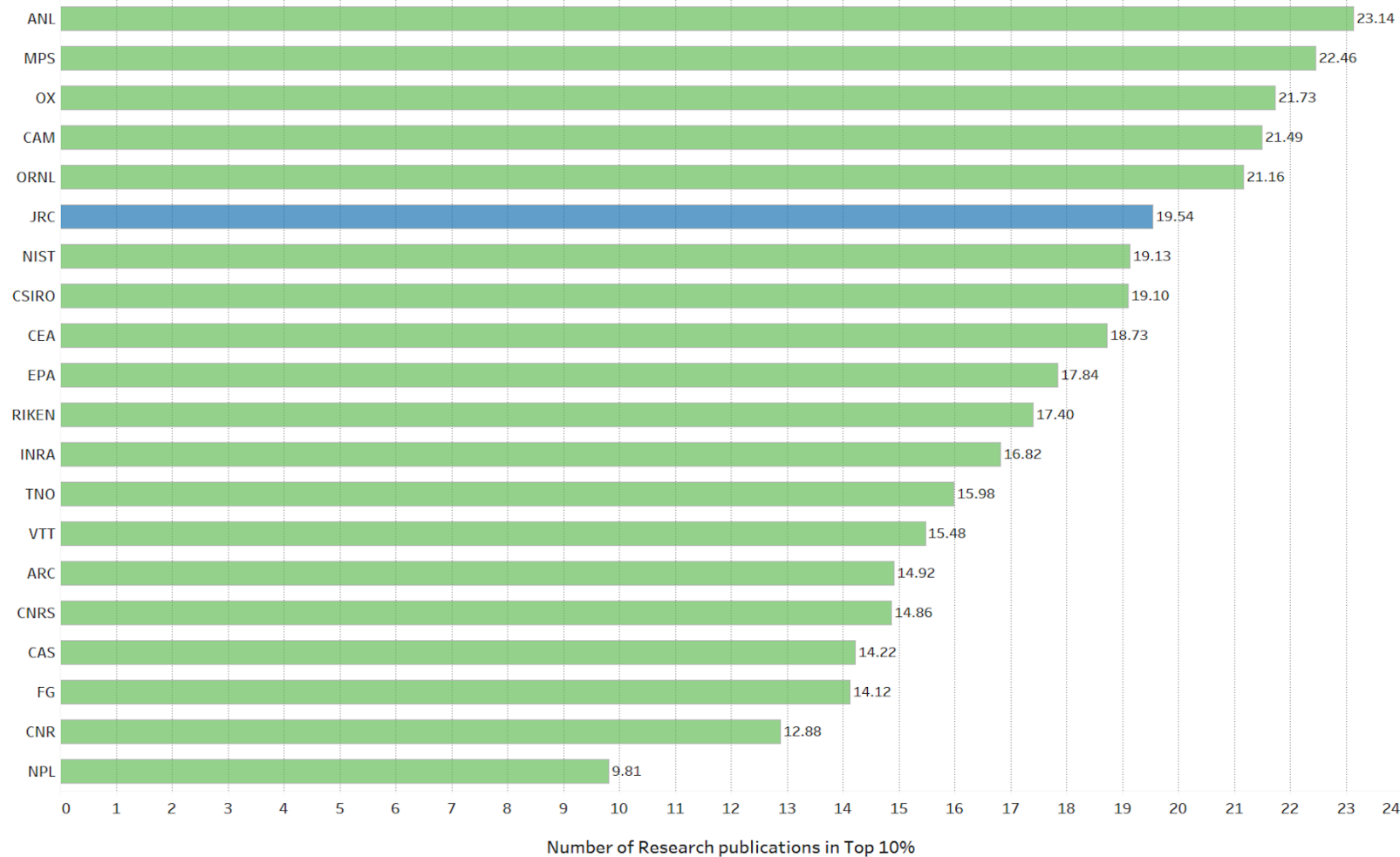
Over **1 400** scientific
publications per year

JRC role: facts and figures

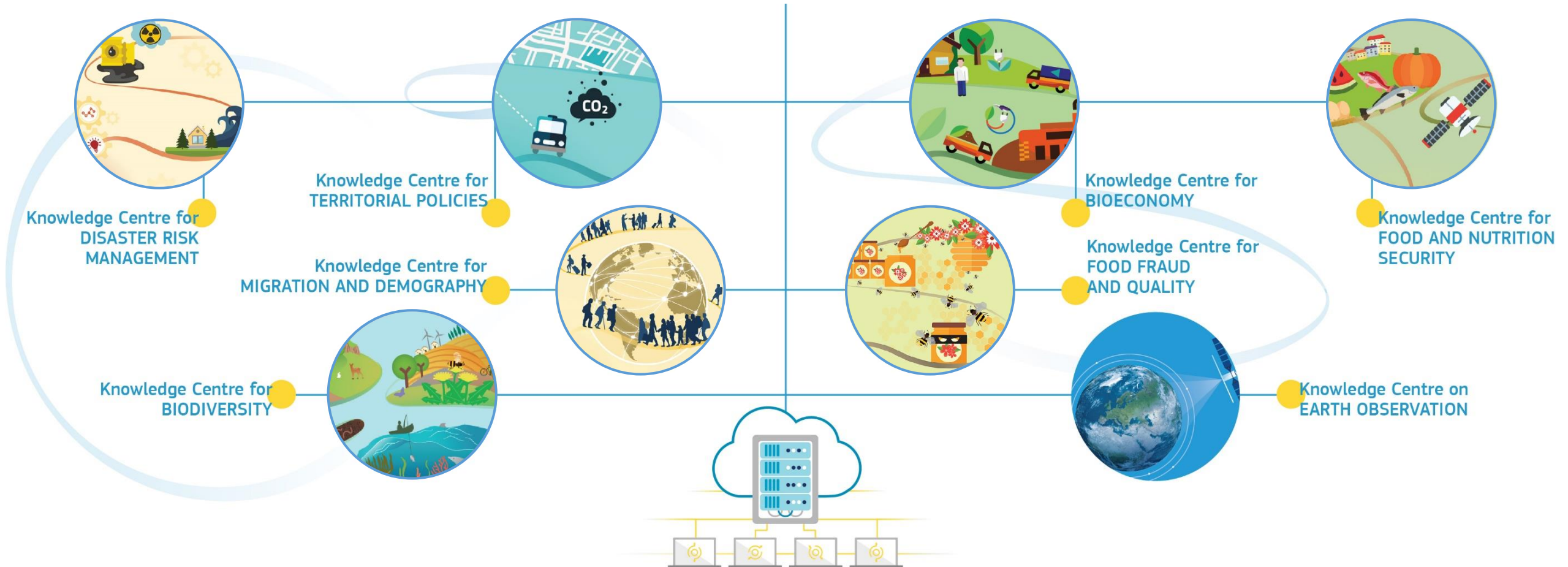


JRC scientific excellence

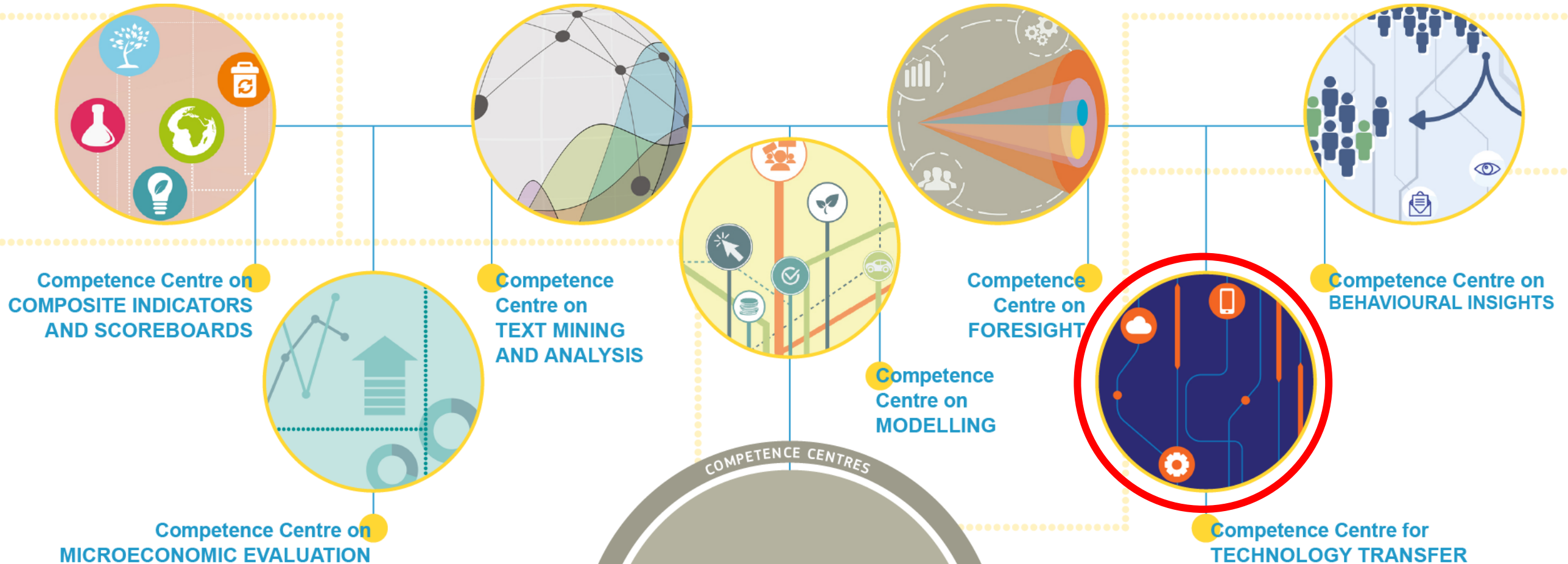
Research publications in top 10 %



Eight Knowledge Centres

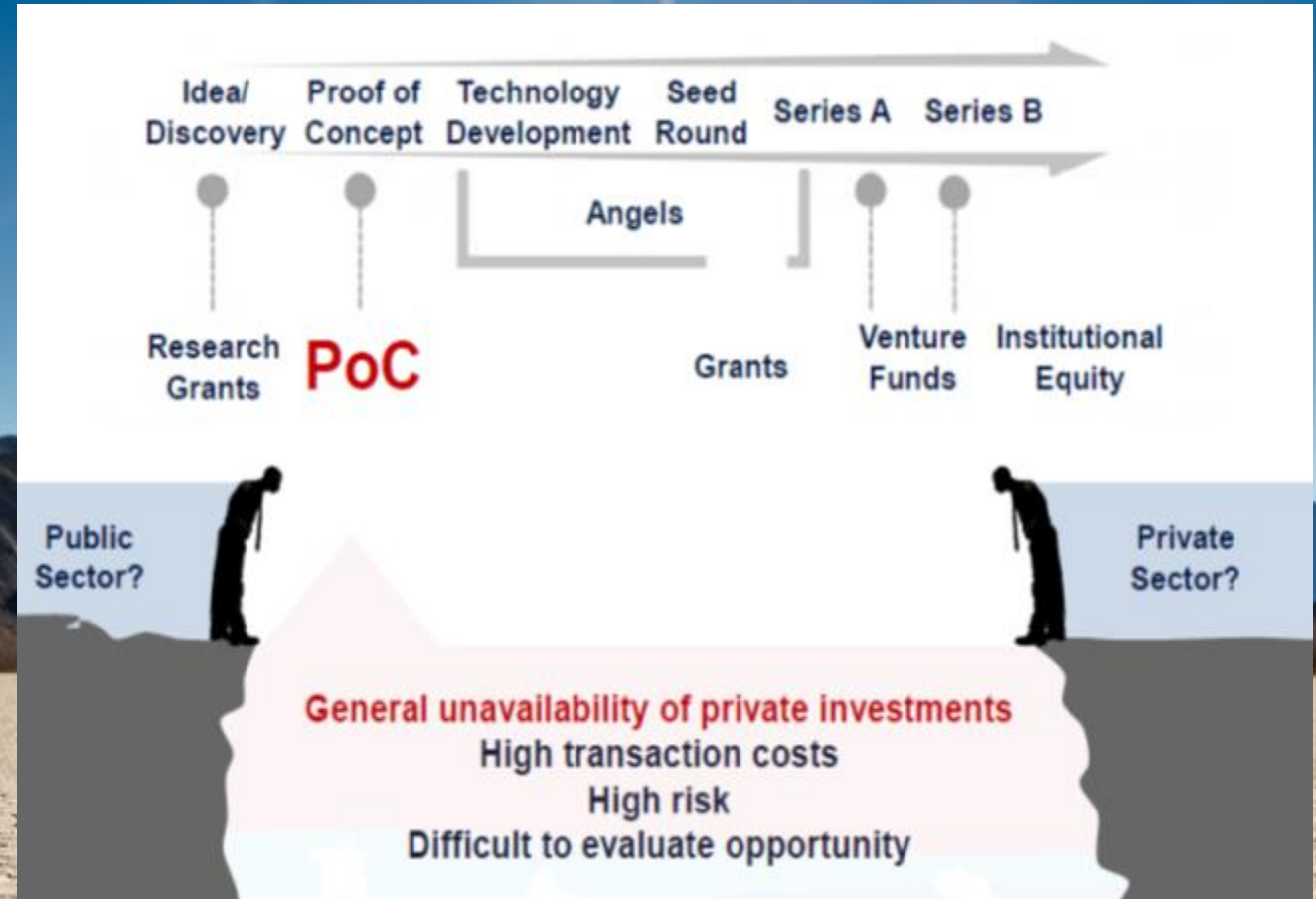


Seven Competence Centres

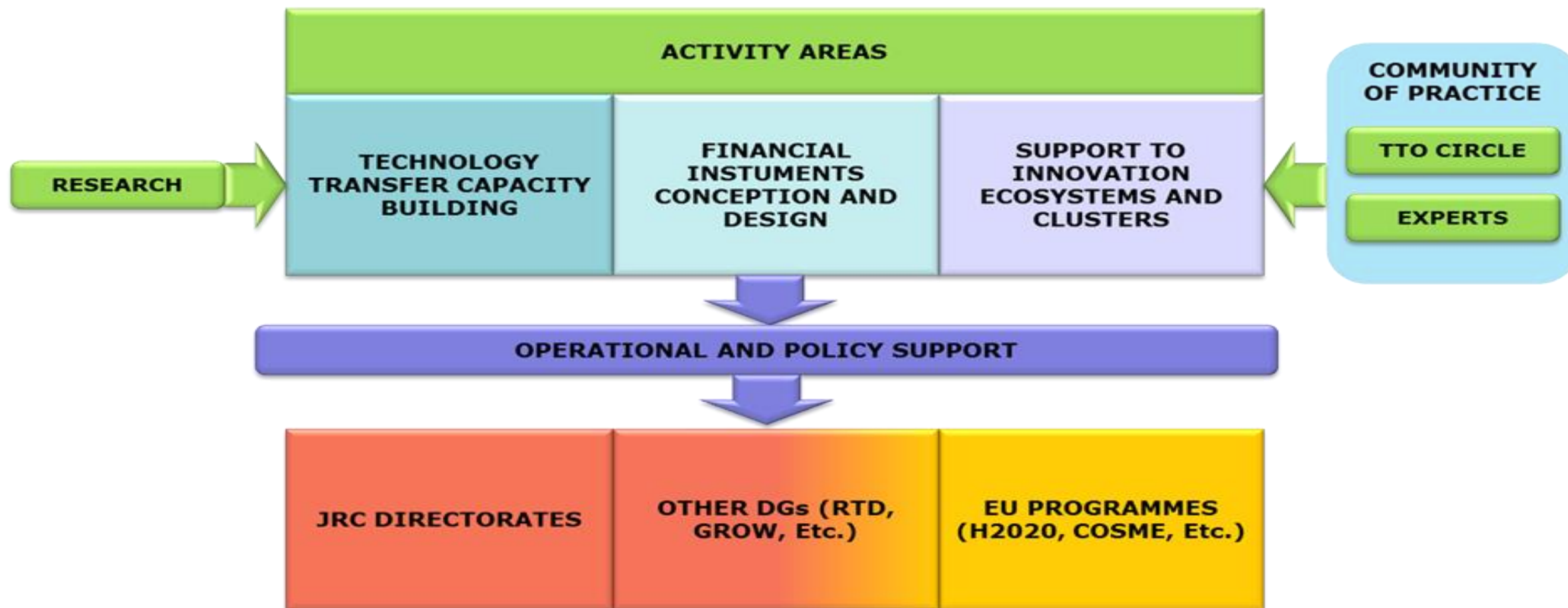


Competence Centre for Technology Transfer

- To create a single reference point for expertise on technology transfer at the EC
- Support the entire EU policy cycle, from the upstream concept stage to the downstream implementation phase.
- To deepen understanding and knowledge of technology transfer through research and aggregation of results and best practices



Competence Centre for Technology Transfer



The smart specialisation

THE SMART SPECIALISATION PLATFORM

Why it was created



What is happening



**Technology Transfer is an
implementation tool of
Smart Specialisations**

Supporting EC DGs/MS with Expertise and Competences

- RTD – Conception and ex-ante evaluation of InnovFin TT
- DG NEAR – Coordination of TT related capacity building measure in the Western Balkans
- DG NEAR - Regional proof of concept support scheme for the Western Balkans
- DG REGIO – Assessment and recommendations on improving operational performance of Sofia Tech Park
- DG REGIO – Strategic Evaluation of Bulgarian Centres of Competence and Centres of Excellence
- DGs RTD/NEAR – Benchmarking study of TT ecosystems in 12 neighbourhood countries
- DG COMP – Study on the application of the state-aid regulation to RDI organisations
- Slovakia/DG REGIO – evaluation study on STP project in Kosice
- DG REGIO – Capacity building for technology transfer in Croatia, Romania and Bulgaria

Studies

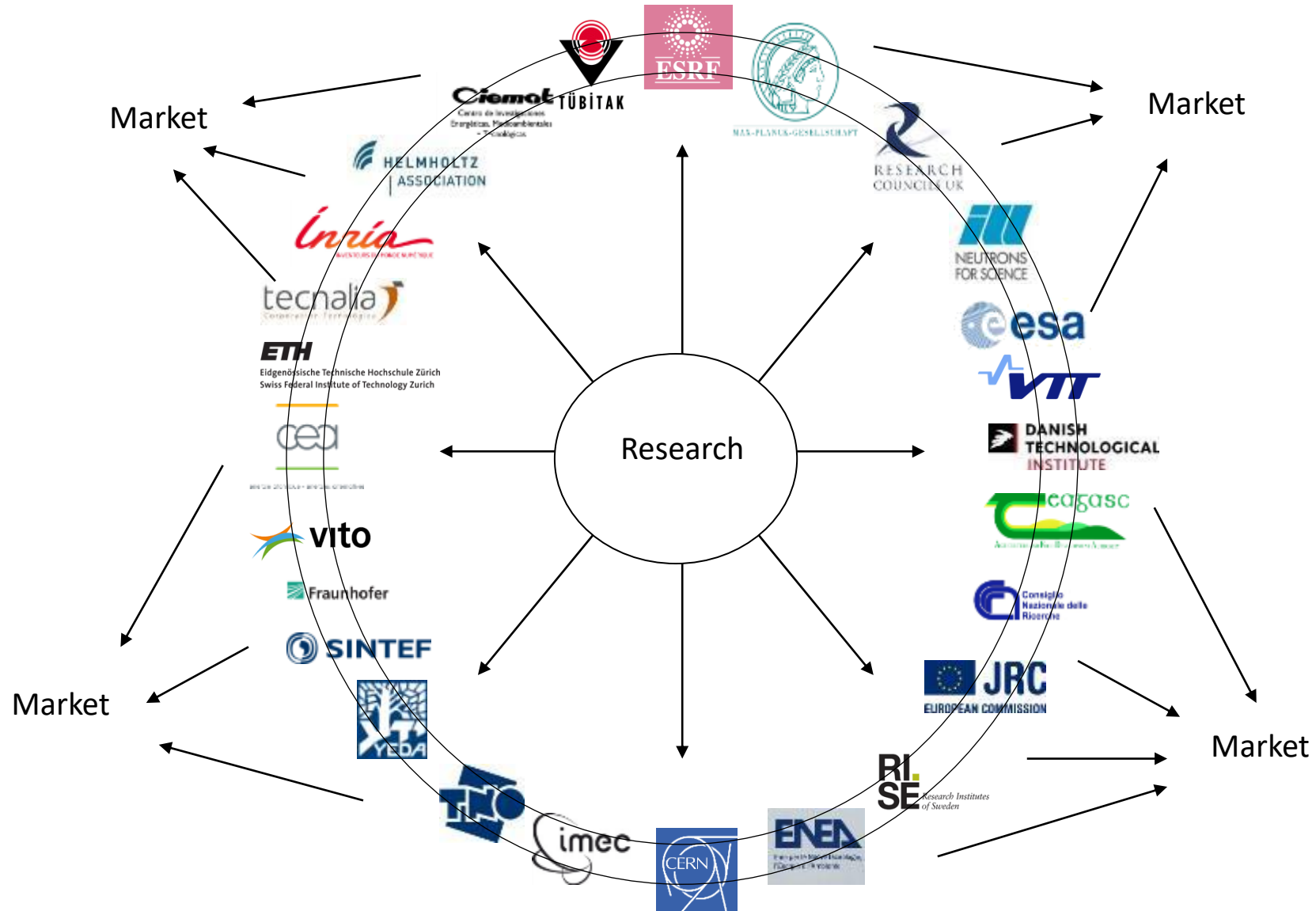
- IP collateralisation and securitisation (2016)
- PPPs in Science and Technology Parks and Innovation Districts (Q1 2020)
- Corporate Venturing (Q1 2020)
- Technology Transfer Metrics (Q1 2020)
- Innovative investment models for sustainable and inclusive urban innovation ecosystems (Q4 2020)
- Technology Transfer Metrics II (Q4 2020)
- TT Knowledge Management (2021)
- China Flagship Report II (Chapter on IP and TT)
- Taxonomy of Innovation Ecosystems (2021)

Covid-19 related support

- Together with DGs GROW, RTD and SANTE and SEC GEN possibilities for creation of a patent pool for Covi-19 related technologies. In collaboration with UN Medicines Patent Pool.
- Supporting DG GROW and Commission's Clearing House in relation to PCR test kits and reagents
- Support to the TEAM Europe Initiative for Africa. Technology Transfer for setting up a m-RNA vaccine production facility in South Africa

• European TTO CIRCLE

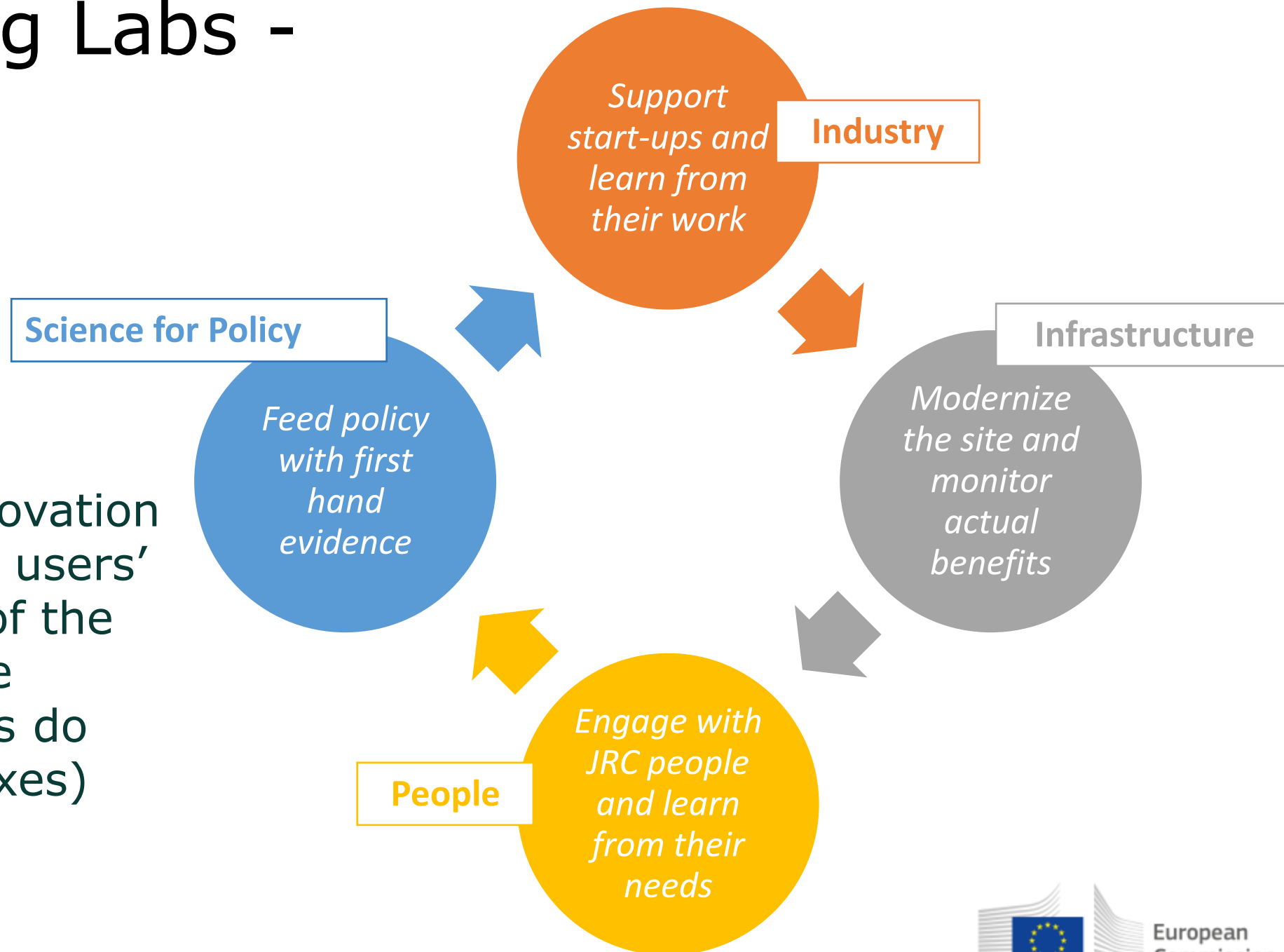
30+ Public Research Organizations
200.000 staff
35.000 patents
4.200 Startups
5.200 software



<https://ec.europa.eu/jrc/communities/en/community/tto-circle-community>

JRC Living Labs - drivers

Living labs are innovation ecosystems where users' behaviour is part of the research and some limiting regulations do not apply (sandboxes)



JRC Living Labs as policy-support instrument

- Gradually integrate living labs within different policy areas (starting with energy and transport)
- Bring living labs approach closer to the policy realm

Examples:

- Support Horizon Europe
- Support regulation and standards – JRC Living Labs as a tool for regulatory learning

Thank You !

JRC Ispra Facilities



1. Hydrogen Testing Facility, 2. European Laboratory for Structural Assessment (ELSA), 3. European Interoperability Centre for Electric Vehicles and Smart Grids, 4. Food Contact Materials (EURL FCM), 5. European Crisis Management Laboratory (ECML), 6. European Microwave Signature Laboratory (EMSL), 7. Vehicle Emission Laboratory (VELA), 8. European Solar Test Installation (ESTI), 9. Nanobiotechnology Laboratory, 10. Hot Cell Laboratory, 11. Reference materials processing facility, 12. AMALIA Laboratory